

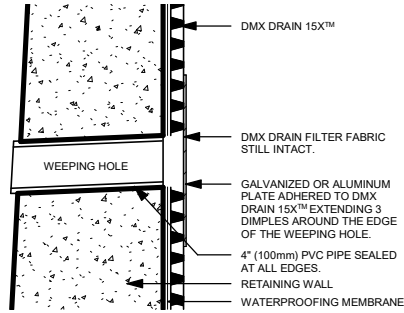
# DMX DRAIN 15X™ APPLIED TO RETAINING WALL

**NOTES:**

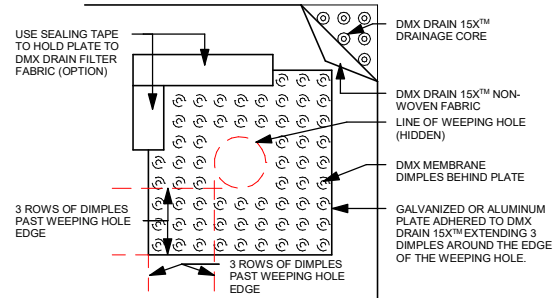
1. DRAWINGS THAT HAVE N.T.S IN BRACKETS ARE NOT TO SCALE.
2. N.T.S DRAWINGS ARE DESIGNED TO HIGHLIGHT THE LOCATION OF DMX DRAIN.
3. DETAILS ARE INTENDED TO BE A RECOMMENDED GUIDE FOR INSTALLATIONS.
4. ANY CONSTRUCTION / WORKING DRAWINGS PROVIDED FOR THE PROJECT SHOULD BE FOLLOWED AS DESIGNED.



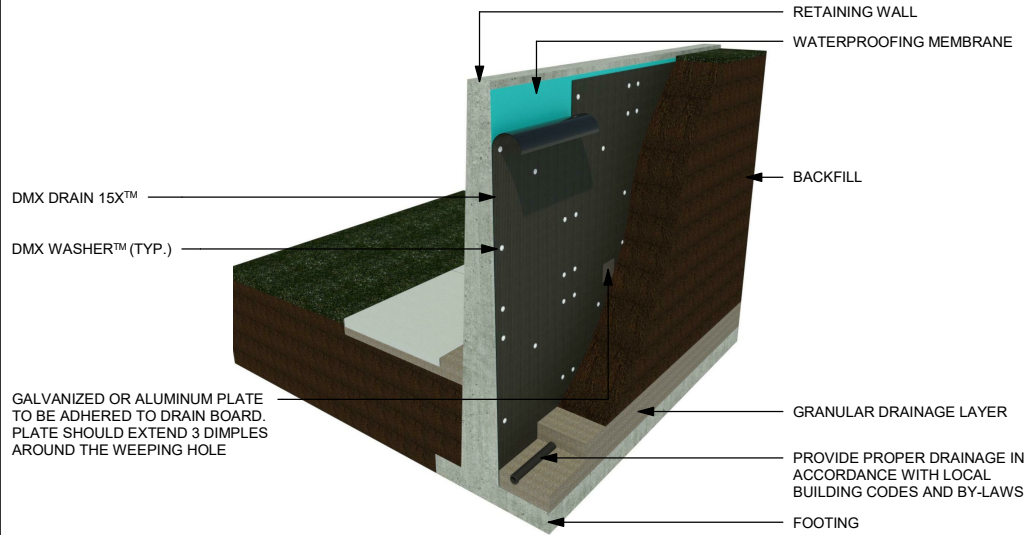
BETTER SCIENCE, BETTER PRODUCT



DMX DRAIN 15X™ AT WEEPING HOLE  
(SECTION VIEW - N.T.S)



DMX DRAIN 15X™ AT WEEPING HOLE  
(FRONT VIEW - N.T.S)



DMX DRAIN 15X™ APPLIED TO RETAINING WALL  
(ISO)



BETTER SCIENCE  
BETTER PRODUCT

**DMX Plastics Limited**

165 Orenda Rd.  
Brampton, On  
L6W 1W3  
905.458.8998

www.dmxmembranes.com

DMX DRAIN 15X APPLIED TO RETAINING WALL

Drawing number 15X.04

Date 09-01-2021

Drawn by BT

**A304**

Scale As indicated