

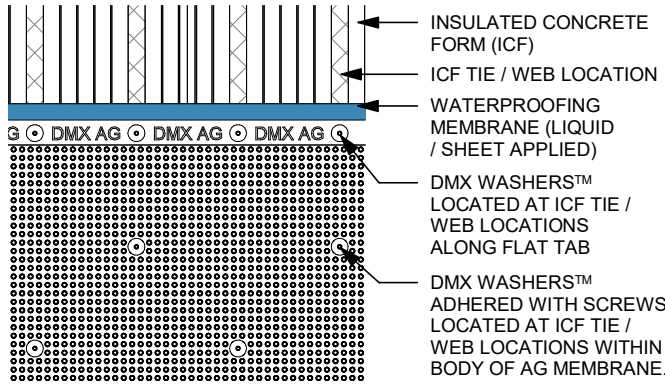
# DMX AG™ FOUNDATION WRAP ON INSULATED CONCRETE FORMS (ICF)

**NOTES:**

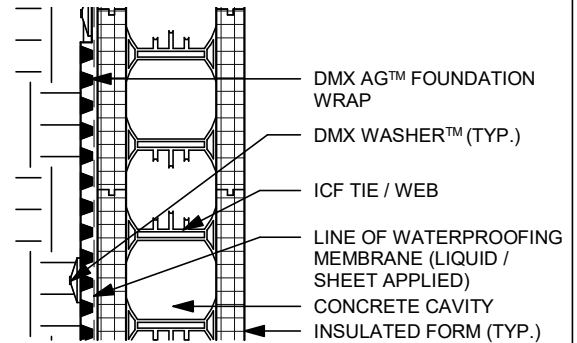
1. DRAWINGS THAT HAVE N.T.S IN BRACKETS ARE NOT TO SCALE.
2. N.T.S DRAWINGS ARE DESIGNED TO HIGHLIGHT THE LOCATION OF DMX AG™.
3. DETAILS ARE INTENDED TO BE A RECOMMENDED GUIDE FOR INSTALLATIONS.
4. ANY CONSTRUCTION / WORKING DRAWINGS PROVIDED FOR THE PROJECT SHOULD BE FOLLOWED AS DESIGNED.



BETTER SCIENCE, BETTER PRODUCT



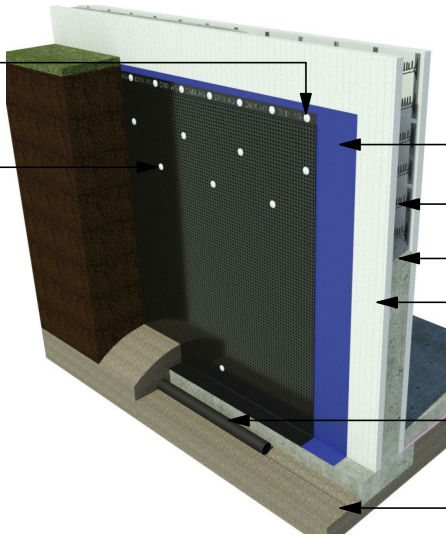
DMX AG™ ON ICF  
(FRONT VIEW - 1:20)



DMX AG™ ON ICF  
(SECTION VIEW - N.T.S)

FLAT TAB FASTENED WITH DMX WASHERS™ AND SCREWS SPACED AT 8" (200mm) OR 12" (300mm) WHERE WEB / TIES ARE LOCATED.

DMX WASHERS™ LOCATED EVERY 16" (400mm) OR 24" (600mm). (SEE ICF MANUFACTURER SPECS)



WATERPROOFING MEMBRANE (LIQUID OR SHEET APPLIED)

ICF TIE / WEB

POURED CONCRETE

INSULATED CONCRETE FORM (ICF)

PROPER DRAINAGE TO BE PROVIDED IN ACCORDANCE WITH LOCAL BUILDING CODES

GRANULAR DRAINAGE LAYER

DMX AG™ FOUNDATION WRAP ON ICF  
(ISO)

BETTER SCIENCE  
BETTER PRODUCT

**DMX Plastics Limited**  
 165 Orenda Rd.  
 Brampton, On  
 L6W 1W3  
 905.458.8998

[www.dmxmembranes.com](http://www.dmxmembranes.com)

DMX AG FOUNDATION WRAP ON INSULATED CONCRETE FORM (ICF)

Drawing number AG.04

Date 09-02-2021

Drawn by BT

**A104**

Scale As indicated