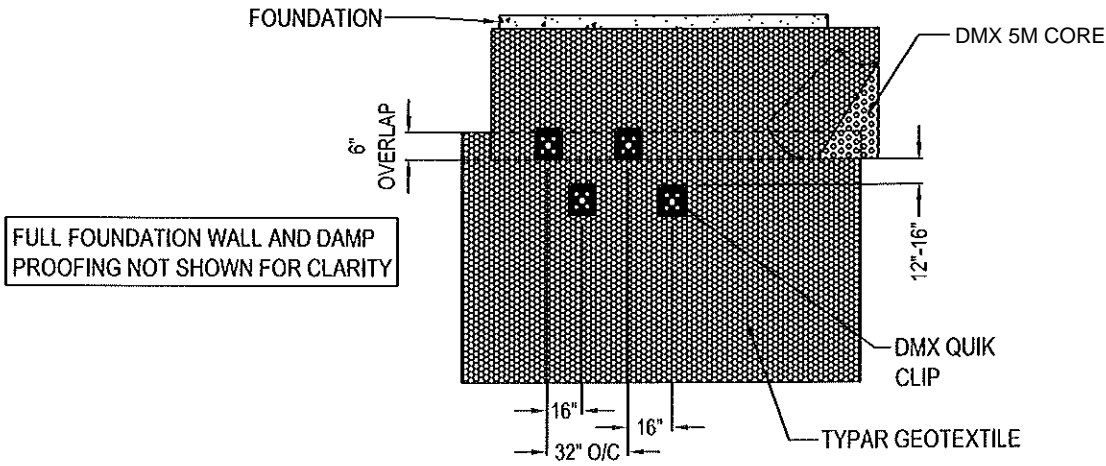


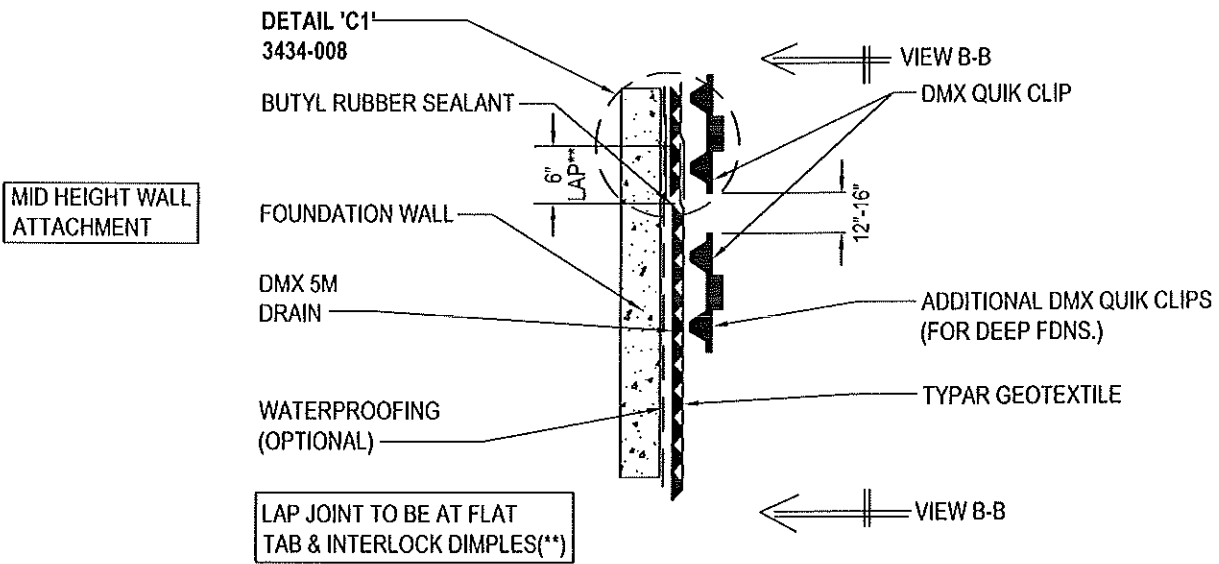


DMX PLASTICS LIMITED
 300 WALKER DRIVE
 BRAMPTON, ON
 ZIP/POSTAL CODE: L6T 4B3
 PHONE: (905) 458-8998
 FAX: (905) 458-8994
 www.dmxmembranes.com



FULL FOUNDATION WALL AND DAMP PROOFING NOT SHOWN FOR CLARITY

VIEW B-B

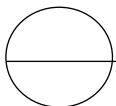


MID HEIGHT WALL ATTACHMENT

LAP JOINT TO BE AT FLAT TAB & INTERLOCK DIMPLES(**)

NOTES:

1. INSTALLATION TO BE COMPLETED IN ACCORDANCE WITH MANUFACTURER'S SPECIFICATIONS.
2. ALL DIMENSIONS ARE CONSIDERED TRUE AND REFLECT MANUFACTURER'S SPECIFICATIONS.
3. FOR ADDITIONAL INFORMATION REGARDING INSTALLATION CONTACT DMX PLASTICS LIMITED TECHNICAL SERVICE AT (905) 458-8998



TYPICAL MID HEIGHT WALL ATTACHMENT DETAILS

HORIZ. OVERLAP - DMX 5M, DMX DRAIN 6000